

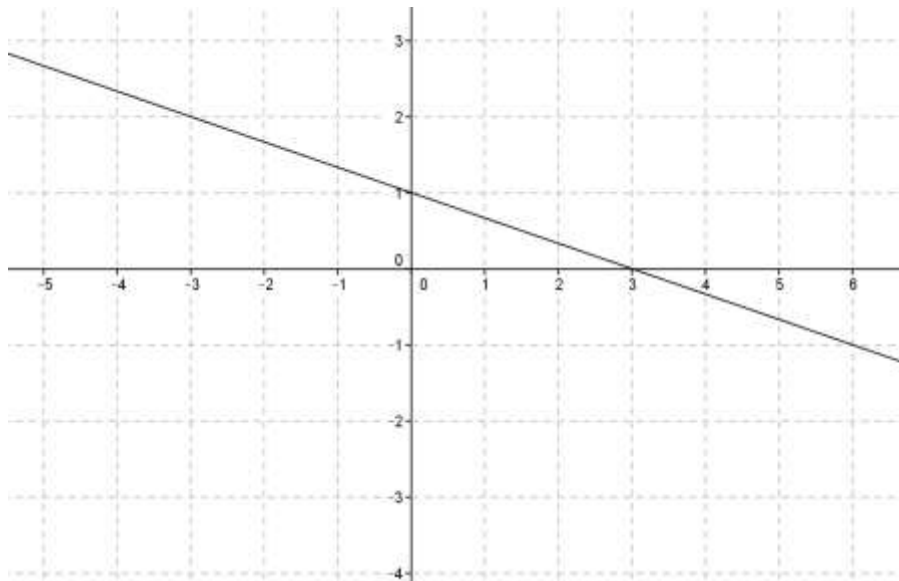
Name \_\_\_\_\_

Date \_\_\_\_\_

## Lesson 20: Every Line is a Graph of a Linear Equation

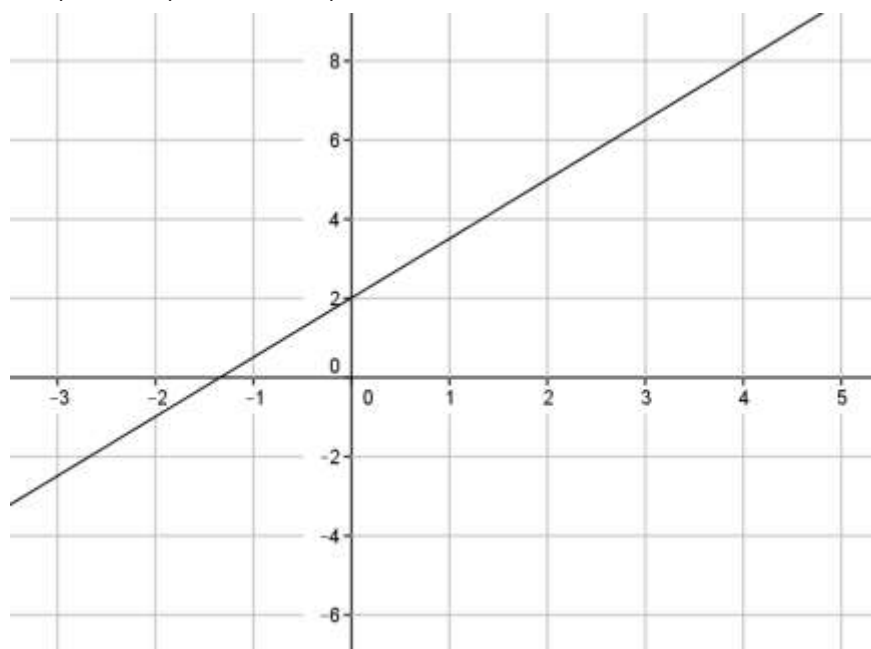
### Exit Ticket

1. Write an equation in slope intercept form that represents the line shown.



Use the properties of equality to change the equation you wrote for problem 1 from slope intercept form,  $y = mx + b$ , to standard form,  $ax + by = c$ , where  $a$ ,  $b$ , and  $c$  are integers and  $a$  is not negative.

2. Write an equation in slope intercept form that represents the line shown.



Use the properties of equality to change the equation you wrote for problem 3 from slope intercept form,  $y = mx + b$ , to standard form,  $ax + by = c$ , where  $a$ ,  $b$ , and  $c$  are integers and  $a$  is not negative.